



# THERMAL TANKS CATALOGUE

# BFT-0

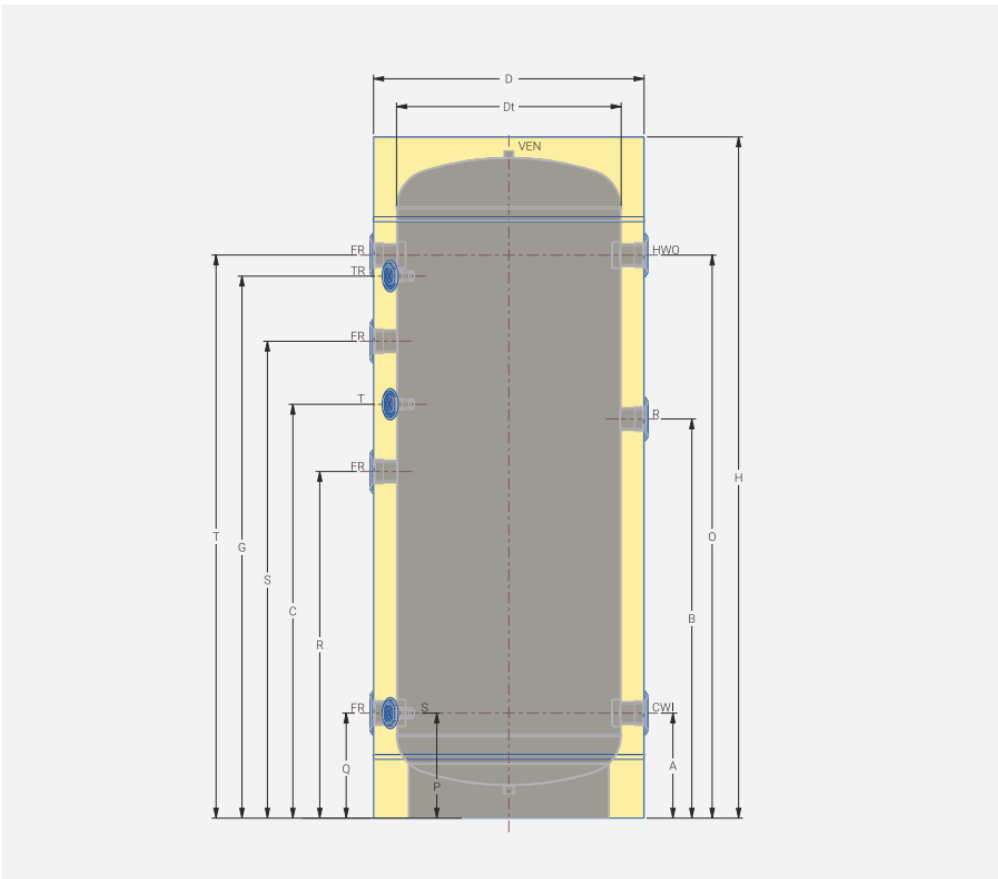
## Buffer tank (100-500L)



### Technical specifications

<b>Material</b>	Steel sheet
<b>Welding</b>	Automatic metal welding
<b>Maximum operating pressure</b>	6 bar
<b>Maximum water test pressure</b>	8 bar
<b>Maximum operating temperature</b>	95°C
<b>Insulation</b>	Removable soft polyurethane foam (55 mm; 100mm for the 500L tank)
<b>Electric heating element</b>	Upon request
<b>External cover</b>	Soft PVC

TYPE		100L		200L		300L		500L	
-	Tank capacity (Liter)	100		204		298		478	
B	Recirculation (R)	1 1/2"	565	1 1/2"	722	1 1/2"	933	1 1/2"	951
A	Cold Water Inlet (CWI)	1 1/2"	205	1 1/2"	222	1 1/2"	233	1 1/2"	251
O	Hot Water Outlet (HWO)		730		1112		1323		1341
C	Thermostat (T)	1/2"	430	1/2"	757	1/2"	968	1/2"	986
G	Thermometer (TR)		630		1062		1273		1291
P	Sensor (S)		205		222		233		251
Q	Free outlet (FR)	1 1/2"	205	1 1/2"	222	1 1/2"	233	1 1/2"	251
R	Free outlet (FR)		367		597		808		826
S	Free outlet (FR)		567		907		1118		1136
T	Free outlet (FR)		730		1112		1323		1341
-	Ventilation (VEN)	1/2"		1/2"		1/2"		1"	
D	External Diameter	500		590		630		840	
Dt	Internal Diameter	390		480		520		640	
H	Total height	967		1400		1630		1724	
-	Tilt height	1071		1519		1748		1918	
-	Weight (kg)	36		54		67		96	



# BFT-1

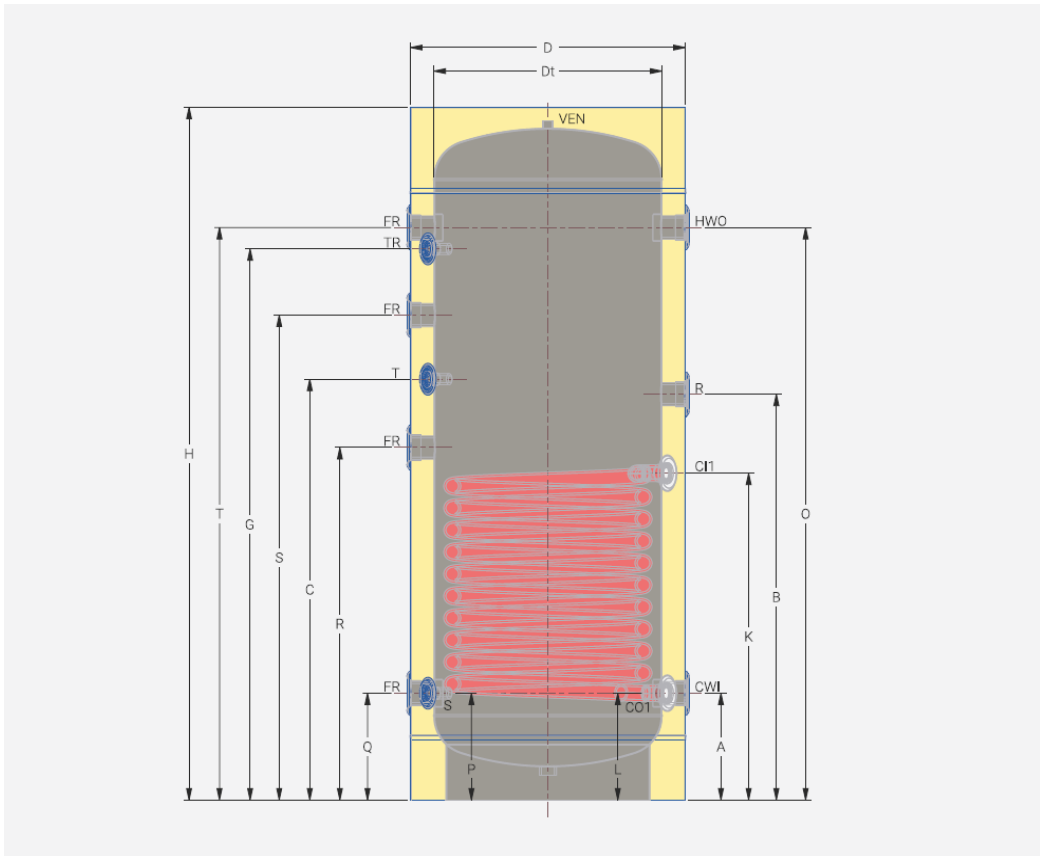
## Buffer tank (200-500L)



### Technical specifications

<b>Material</b>	Steel sheet
<b>Welding</b>	Automatic metal welding
<b>Maximum operating pressure</b>	6 bar
<b>Maximum water test pressure</b>	8 bar
<b>Maximum operating temperature</b>	95°C
<b>Coil</b>	Steel tube
<b>Total coil pressure</b>	16 bar
<b>Total coil temperature</b>	160°C
<b>Maximum coil test pressure</b>	25 bar
<b>Insulation</b>	Removable soft polyurethane foam (55 mm; 100mm for the 500L tank)
<b>Electric heating element</b>	Upon request
<b>External cover</b>	Soft PVC

TYPE	150L	200L	300L	500L
- Tank capacity (Liter)	139	197	289	462
- Coil capacity (Liter)	4,66	5,98	7,93	14,54
K Coil S1 inlet (CI1)	1" 535	1" 682	1" 748	1" 766
L Coil S1 outlet (CO1)	1" 235	1" 222	1" 233	1" 251
- Coil S1 surface (m <sup>2</sup> )	0,78	0,98	1,25	2,28
- Coil S1 Efficiency (Kw)	19,24	24,17	30,83	56,23
B Recirculation (R)	1 1/2" 595	1 1/2" 722	1 1/2" 933	1 1/2" 951
A Cold Water Inlet (CWI)	1 1/2" 235	1 1/2" 222	1 1/2" 233	1 1/2" 251
O Hot Water Outlet (HWO)	1 1/2" 835	1 1/2" 1112	1 1/2" 1323	1 1/2" 1341
C Thermostat (T)	1/2" 535	1/2" 757	1/2" 968	1/2" 986
G Thermometer (TR)	1/2" 735	1/2" 1062	1/2" 1273	1/2" 1291
P Sensor (S)	1/2" 235	1/2" 222	1/2" 233	1/2" 251
Q Free outlet (FR)	1 1/2" 235	1 1/2" 222	1 1/2" 233	1 1/2" 251
R Free outlet (FR)	1 1/2" 435	1 1/2" 597	1 1/2" 808	1 1/2" 826
S Free outlet (FR)	1 1/2" 635	1 1/2" 907	1 1/2" 1118	1 1/2" 1136
T Free outlet (FR)	1 1/2" 835	1 1/2" 1112	1 1/2" 1323	1 1/2" 1341
- Ventilation (VEN)	1/2"	1/2"	1/2"	1"
D External Diameter	560	590	630	840
Dt Internal Diameter	450	480	520	640
H Total height	1120	1400	1630	1724
- Tilt height	1252	1519	1748	1918
- Weight (kg)	61	73	90	127



# BFT-2

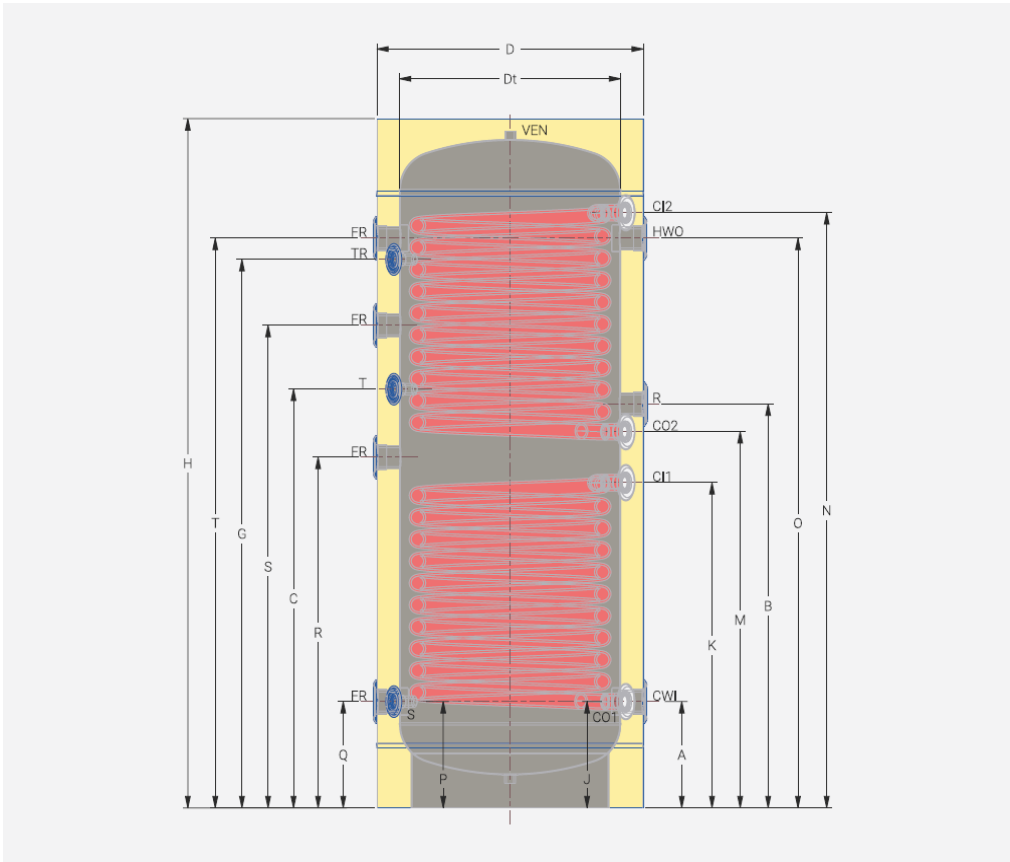
## Buffer tank (200-500L)



### Technical specifications

<b>Material</b>	Steel sheet
<b>Welding</b>	Automatic metal welding
<b>Maximum operating pressure</b>	6 bar
<b>Maximum water test pressure</b>	8 bar
<b>Maximum operating temperature</b>	95°C
<b>Coil</b>	Steel tube
<b>Total coil pressure</b>	16 bar
<b>Total coil temperature</b>	160°C
<b>Maximum coil test pressure</b>	25 bar
<b>Insulation</b>	Removable soft polyurethane foam (55 mm; 100mm for the 500L tank)
<b>Electric heating element</b>	Upon request
<b>External cover</b>	Soft PVC

TYPE	150L	200L	300L	500L				
- Tank capacity (Liter)	136	192	280	446				
- Coil S1/S2 capacity (Liter)	4,66 / 2,67	5,98 / 4,66	7,93 / 7,93	14,54 / 14,54				
K Coil S1 inlet (CI1)	1"	535	1"	682	1"	748	1"	766
N Coil S2 inlet (CI2)		835		1102		1383		1401
L Coil S1 outlet (CO1)		235		222		233		251
M Coil S2 outlet (CO2)		655		802		868		886
- Coil S1/S2 surface (m <sup>2</sup> )	0,78 / 0,47	0,98 / 0,78	1,25 / 1,25	2,28 / 2,28				
- Coil S1/S2 Efficiency (Kw)	19,24 / 11,59	24,17 / 19,24	30,83 / 30,83	56,23 / 56,23				
B Recirculation (R)	1 1/2"	595	1 1/2"	722	1 1/2"	933	1 1/2"	951
A Cold Water Inlet (CWI)	1 1/2"	235	1 1/2"	222	1 1/2"	233	1 1/2"	251
O Hot Water Outlet (HWO)		835		1112		1323		1341
C Thermostat (T)	1/2"	535	1/2"	757	1/2"	968	1/2"	986
G Thermometer (TR)		735		1062		1273		1291
P Sensor (S)		235		222		233		251
Q Free outlet (FR)		235		222		233		251
R Free outlet (FR)	1 1/2"	435	1 1/2"	597	1 1/2"	808	1 1/2"	826
S Free outlet (FR)		635		907		1118		1136
T Free outlet (FR)		835		1112		1323		1341
- Ventilation (VEN)	1/2"	1/2"	1/2"	1"				
D External Diameter	560	590	630	840				
Dt Internal Diameter	450	480	520	640				
- Total height	1120	1400	1630	1724				
- Tilt height	1252	1520	1748	1918				
- Weight (kg)	73	88	111	159				



# BLT-1

## HSW tank (200-500L)

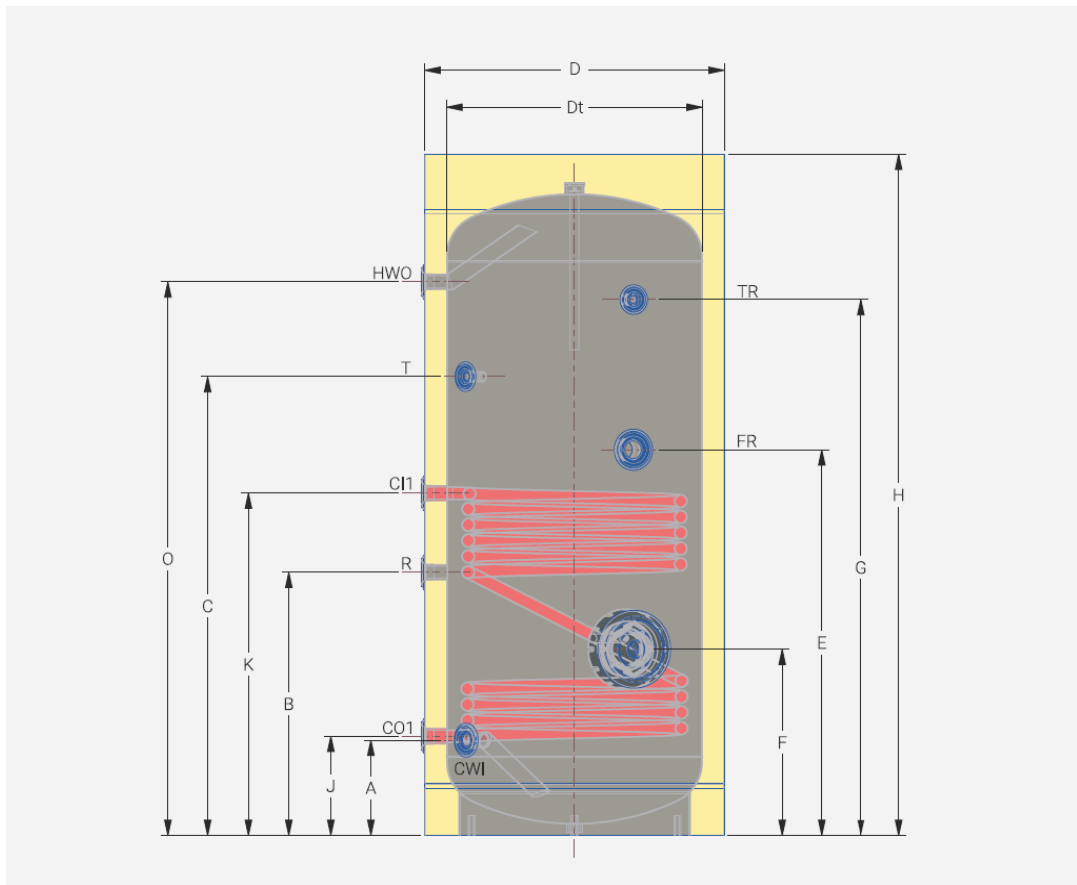
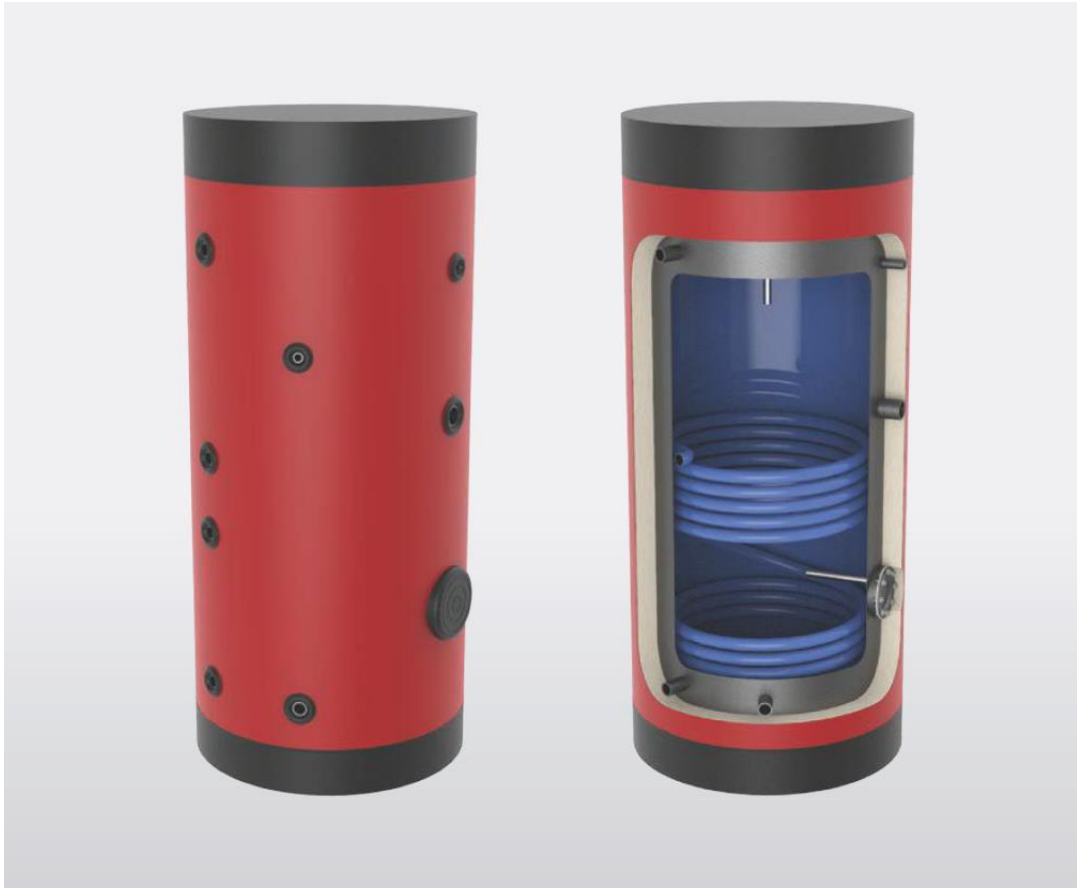


### Technical specifications

<b>Material</b>	Steel sheet
<b>Welding</b>	Automatic metal welding
<b>Protection coating</b>	High quality glass – Enamel and protection anode
<b>Maximum operating pressure</b>	10 bar
<b>Maximum water test pressure</b>	15 bar
<b>Maximum operating temperature</b>	95°C
<b>Coil</b>	Steel tube
<b>Maximum coil test pressure</b>	25 bar
<b>Insulation</b>	Hard polyurethane foam (55 mm)
<b>Electric heating element</b>	Upon request
<b>External cover</b>	Soft PVC

TYPE	150L		200L		300L		500L	
- Tank capacity (Liter)	139		197		289		462	
- Coil S1 capacity (Liter)	4,66		5,98		9,91		12,56	
K Coil S1 inlet (CI1)	1"	547	1"	669	1"	818	1"	866
J Coil S1 outlet (CO1)		217		209		218		251
- Coil S1 surface (m <sup>2</sup> )	0,78		0,98		1,55		1,97	
- Coil S1 Efficiency (kw)	19,24		24,17		38,23		48,59	
B Recirculation (R)	3/4"	437	3/4"	519	3/4"	618	1"	666
A Cold Water Inlet (CWI)	1"	217	1"	209	1"	218	1"	241
O Hot Water Outlet (HWO)		849		1140		1398		1401
C Thermostat (T)	1/2"	635	1/2"	1039	1/2"	1148	1/2"	1161
G Thermometer (TR)		839		1135		1318		1356
E Free outlet (FR)	1 1/2"	628	1 1/2"	754	1 1/2"	931	1 1/2"	976
F Boiler cleaning hole	Ø140	385	Ø140	402	Ø140	453	Ø140	471
- Anode	22x200	22x200	22x400	22x200	32x500	22x400	32x500	32x500
H Total height	1120		1400		1620		1700	
D External Diameter	560		600		630		750	
Dt Internal Diameter	450		480		520		640	
- Tilt height (mm)	1217		1475		1728		1838	
- Weight (kg)	61		80		103		139	





# BLT-2

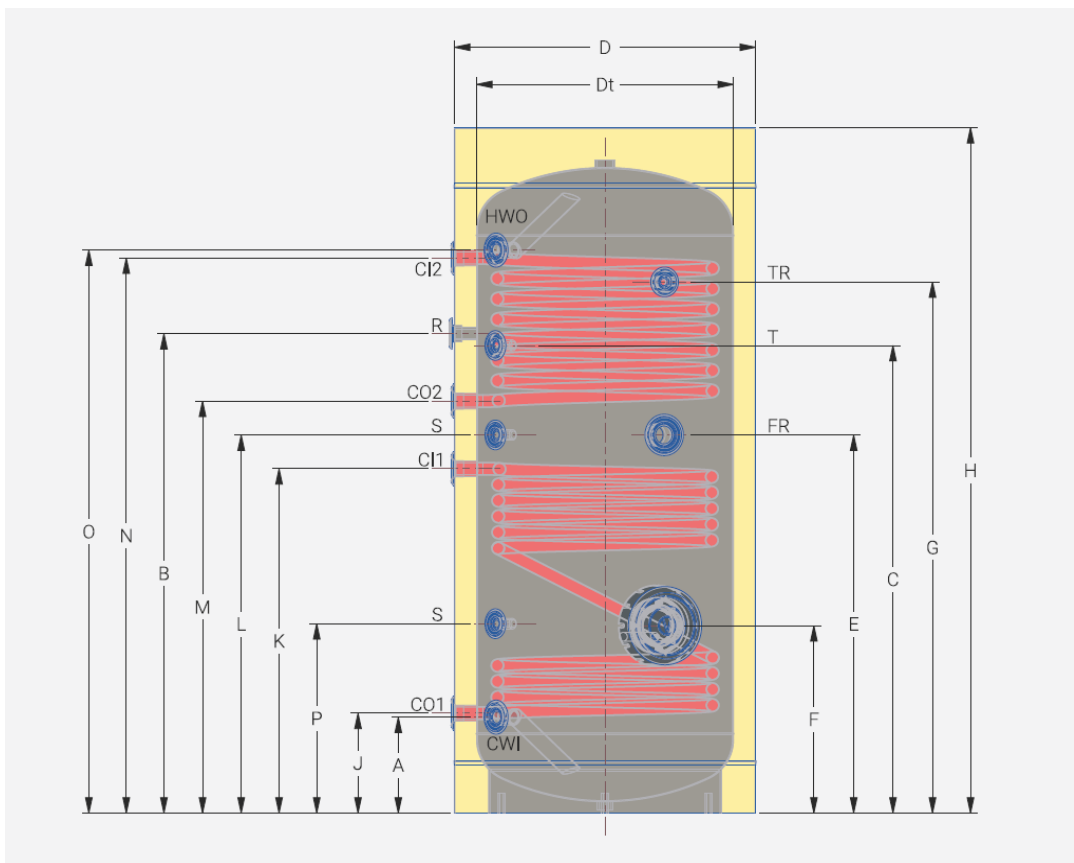
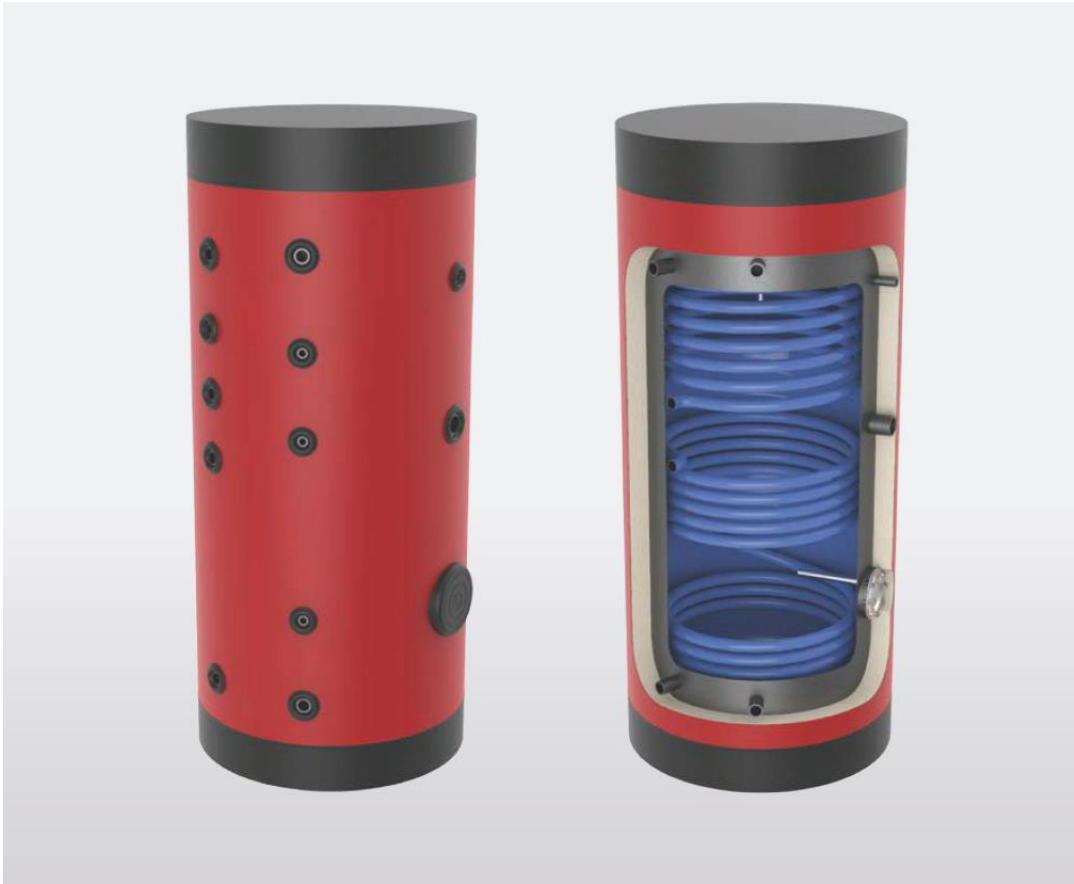
## HSW tank (200-500L)



### Technical specifications

<b>Material</b>	Steel sheet
<b>Welding</b>	Automatic metal welding
<b>Protection coating</b>	High quality glass – Enamel and protection anode
<b>Maximum operating pressure</b>	10 bar
<b>Maximum water test pressure</b>	15 bar
<b>Maximum operating temperature</b>	95°C
<b>Coil</b>	Steel tube
<b>Maximum coil test pressure</b>	25 bar
<b>Insulation</b>	Hard polyurethane foam (55 mm)
<b>Electric heating element</b>	Upon request
<b>External cover</b>	Soft PVC

TYPE		150L		200L		300L		500L	
-	Tank capacity (Liter)	136		192		280		446	
-	Coil S1/S2 capacity (Liter)	4,66 / 2,67		5,98 / 4,66		9,91 / 5,98		12,55 / 7,27	
K	Coil S1 inlet (CI1)	1"	547	1"	669	1"	818	1"	866
N	Coil S2 inlet (CI2)		849		1114		1343		1396
J	Coil S1 outlet (CO1)		217		209		218		251
M	Coil S2 outlet (CO2)		669		834		1043		1036
-	Coil S1/S2 surface (m <sup>2</sup> )	0,78 / 0,47		0,98 / 0,78		1,55 / 0,98		1,97 / 1,14	
-	Coil S1/S2 Efficiency (kw)	19,24 / 11,59		24,17 / 19,24		38,23 / 24,17		48,59 / 28,12	
B	Recirculation (R)	3/4"	759	3/4"	989	3/4"	1243	1"	1206
A	Cold Water Inlet (CWI)	1"	217	1"	209	1"	218	1"	241
O	Hot Water Outlet (HWO)		854		1140		1383		1416
C	Thermostat (T)	1/2"	753	1/2"	1039	1/2"	1198	1/2"	1176
G	Thermometer (TR)		839		1135		1318		1336
P	Sensor (S)		347		314		443		476
L	Sensor (S)		608		749		931		951
E	Free outlet (FR)	1 1/2"	608	1 1/2"	749	1 1/2"	931	1 1/2"	951
F	Boiler cleaning hole	Ø140	385	Ø140	402	Ø140	453	Ø140	471
-	Anode	22x200	22x200	22x400	22x200	32x500	22x400	32x500	32x500
H	Total height	1120		1400		1620		1700	
D	External Diameter	560		600		630		750	
Dt	Internal Diameter	450		480		520		640	
-	Tilt height (mm)	1217		1475		1728		1838	
-	Weight (kg)	71		92		122		161	



# BLT-1 TP

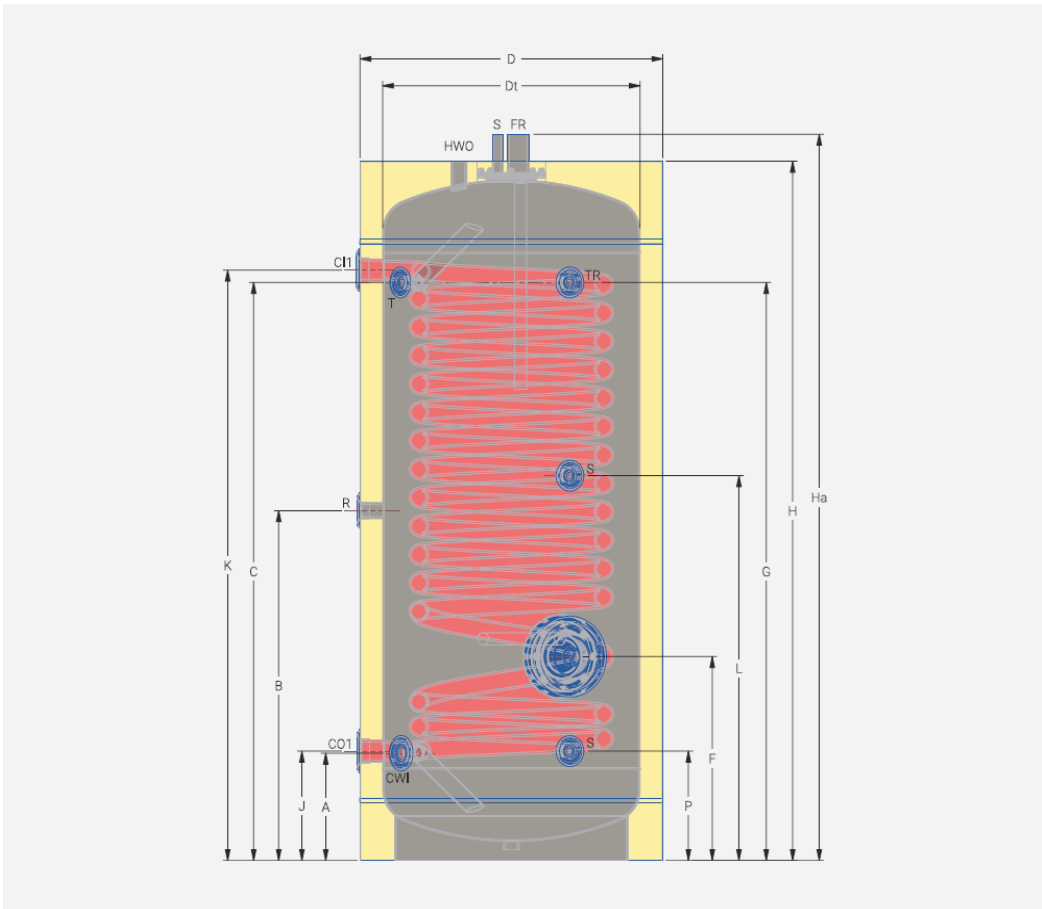
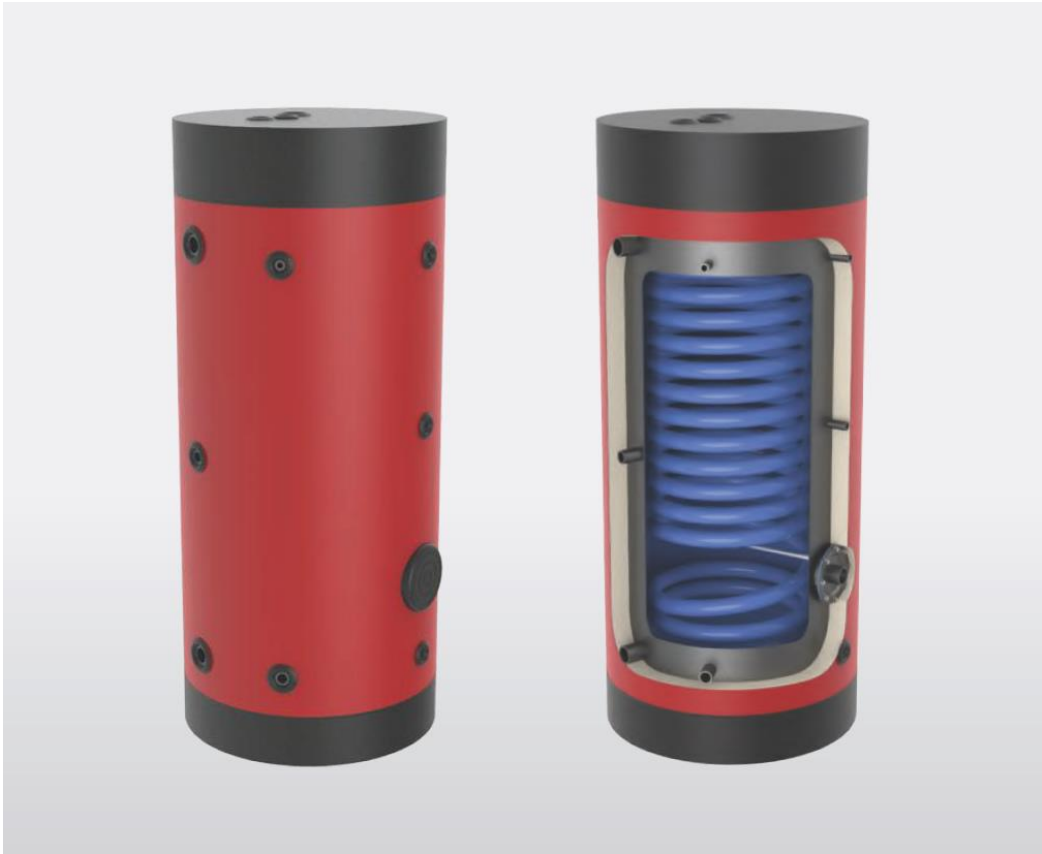
Heat pump tank (200-500L)



## Technical specifications

<b>Material</b>	Steel sheet
<b>Welding</b>	Automatic metal welding
<b>Protection coating</b>	High quality glass – Enamel and protection anode
<b>Maximum operating pressure</b>	10 bar
<b>Maximum water test pressure</b>	15 bar
<b>Maximum operating temperature</b>	95°C
<b>Coil</b>	Steel tube
<b>Coil protection</b>	High quality glass
<b>Maximum coil test pressure</b>	25 bar
<b>Insulation</b>	Hard polyurethane foam (55 mm)
<b>Electric heating element</b>	Upon request
<b>Flange diameter (Anode-cleaning flange)</b>	Φ170mm (UPPER); Φ140mm (LOWER)
<b>External cover</b>	Soft PVC

TYPE		200L		300L		500L	
-	Tank capacity (Liter)	179		264		434	
-	Coil S1 capacity (Liter)	22,68		31,75		39,69	
K	Coil S1 inlet (CI1)	1 1/2"	1287	1 1/2"	1393	1 1/2"	1411
J	Coil S1 outlet (CO1)		247		223		242
-	Coil S1 surface (m²)	2,65		3,45		3,98	
-	Coil S1 cross section (in)	1 1/4"		1 1/4"		1 1/4"	
	Coil S1 Efficiency (kw)	65,11		91,25		113,94	
B	Recirculation (R)	1"	597	1"	808	1"	826
A	Cold Water Inlet (CWI)	1"	202	1"	223	1"	236
H	Hot Water Outlet (HWO)		1550		1620		1700
C	Thermostat (T)	1/2"	1297	1/2"	1363	1/2"	1381
G	Thermometer (TR)		1297		1353		1381
Ha	Free outlet (FR)	1 1/2"	1600	1 1/2"	1670	1 1/2"	1750
P	Sensor (S)	1/2"	192	1/2"	223	1/2"	241
L	Sensor (S)		759		883		911
Ha	Sensor (S)		1600		1670		1750
F	Boiler cleaning hole	422		453		471	
	Anodes	22×200 / 22×400		22×400 / 32×500		32×500 / 32×500	
H	Height	1550		1620		1700	
Ha	Total height	1600		1670		1750	
D	External Diameter	600		630		750	
Dt	Internal Diameter	480		520		640	
-	Tilt height (mm)	1641		1728		1838	
-	Weight (kg)	115		140		190	



# BLT-2 TPS

Heat pump & solar (200-500L)



## Technical specifications

<b>Material</b>	Steel sheet
<b>Welding</b>	Automatic metal welding
<b>Protection coating</b>	High quality glass – Enamel and protection anode
<b>Maximum operating pressure</b>	10 bar
<b>Maximum water test pressure</b>	15 bar
<b>Maximum operating temperature</b>	95°C
<b>Coil</b>	Steel tube
<b>Coil protection</b>	High quality glass
<b>Maximum coil test pressure</b>	25 bar
<b>Insulation</b>	Hard polyurethane foam (55 mm)
<b>Electric heating element</b>	Upon request
<b>Flange diameter (Anode-cleaning flange)</b>	Φ170mm (UPPER); Φ140mm (LOWER)
<b>External cover</b>	Soft PVC

TYPE		200L		300L		500L	
-	Tank capacity (Liter)	172		256		423	
-	Coil S1/S2 capacity (Liter)	22,68 / 5,70		31,75 / 6,84		39,69 / 9,12	
K	Coil S1 inlet (CI1)	1 1/2"	1287	1 1/2"	1393	1 1/2"	1411
J	Coil S1 outlet (CO1)		247		223		242
Ha	Coil S2 inlet (CI2)	3/4"	1580	3/4"	1650	3/4"	1730
Ha	Coil S2 outlet (CO2)		1580		1650		1730
-	Coil S1/S2 surface (m <sup>2</sup> )	2,65 / 1,20		3,45 / 1,51		3,98 / 2,01	
-	Coil S1 cross section (in)	1 1/4"		1 1/4"		1 1/4"	
-	Coil S2 cross section (in)	3/4"		3/4"		3/4"	
B	Coil S1/S2 Efficiency (kw)	65,11 / 30,10		91,25 / 36,25		113,94 / 48,34	
A	Recirculation (R)	1"	597	1"	808	1"	826
H	Cold Water Inlet (CWI)	1"	202	1"	223	1"	236
C	Hot Water Outlet (HWO)		1550		1620		1710
G	Thermostat (T)	1/2"	1297	1/2"	1363	1/2"	1381
Ha	Thermometer (TR)		1297		1353		1381
P	Free outlet (FR)	1 1/2"	1600	1 1/2"	1670	1 1/2"	1770
L	Sensor (S)	1/2"	192	1/2"	223	1/2"	241
Ha	Sensor (S)		759		883		911
F	Sensor (S)		1600		1670		1770
H	Boiler cleaning hole	422		453		471	
Ha	Anodes	22×200 / 22×400		22×400 / 32×500		32×500 / 32×500	
D	Height	1550		1620		1700	
Dt	Total height	1600		1670		1750	
-	External Diameter	600		630		750	
-	Internal Diameter	480		520		640	
	Tilt height (mm)	1641		1728		1838	
	Weight (kg)	138		164		220	

