



# INOVA HEAT PUMP

DESIGN CONCEPTS

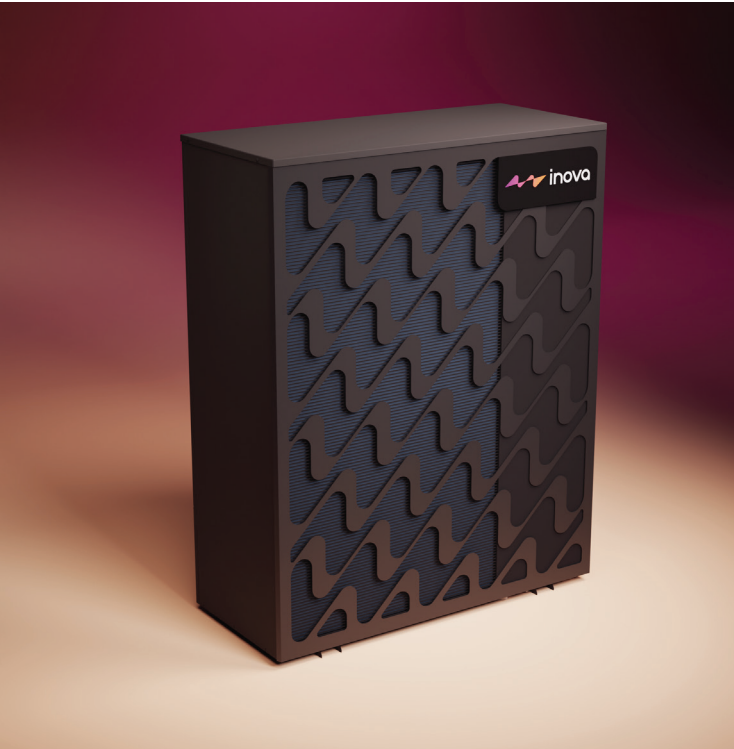
# PROPOSAL **A**

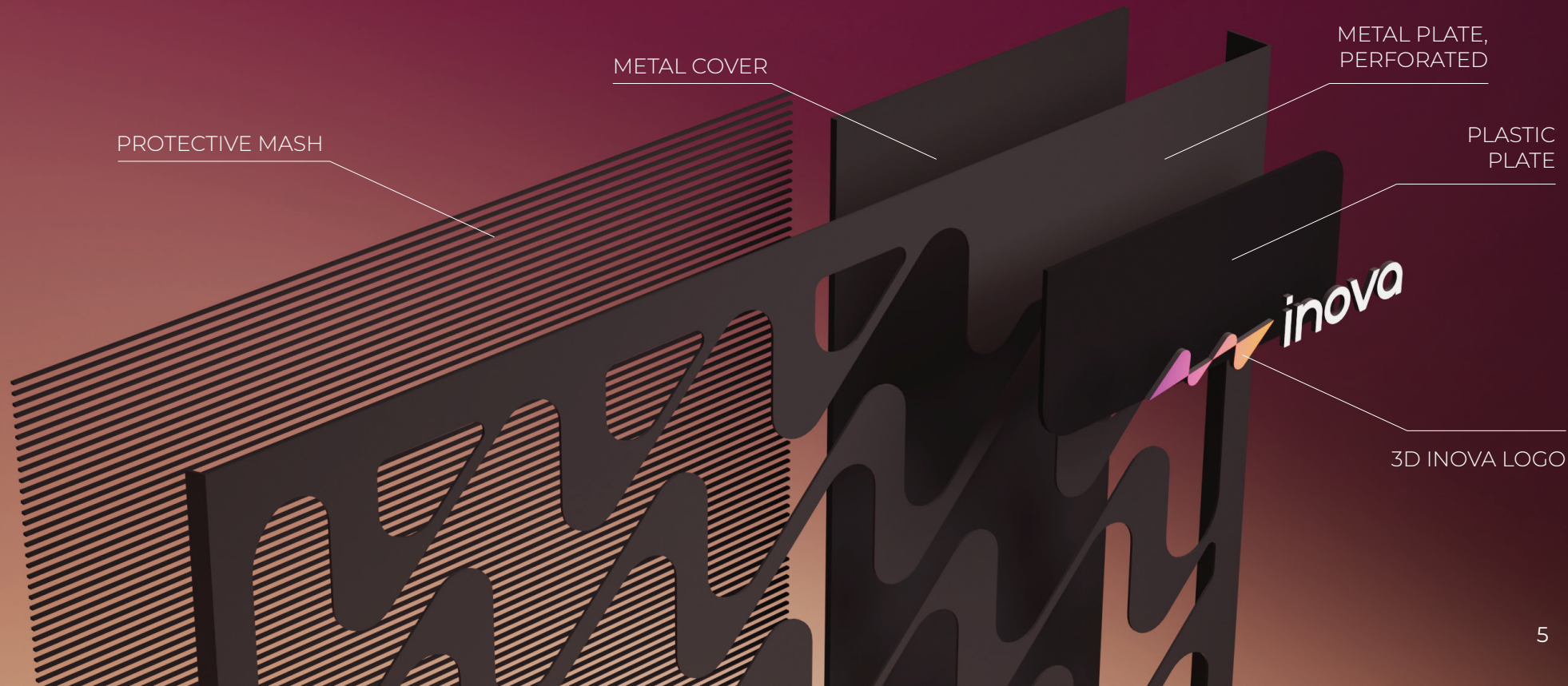


This proposal was conceived with the aim of elevating the visibility of Inova products in the market through innovative design. The foundation for the perforations on the front grille is inspired by the Inova logo.

The logo is placed on a dark black plate, which stands out even more due to its distinct materialization. The mesh behind the perforations further enhances the overall impression, adding an extra touch of sophistication.







# PROPOSAL **B**



In this proposal, the front grille is made of plastic, providing the opportunity for the grille to be more substantial and of a more intricate shape.

Elegant lines create an intriguing 3D effect, even though the grille itself is entirely flat. The logo is prominently featured with lines that guide the gaze towards it.





ONE PIECE PLASTIC GRILLE



3D LOGO

# PROPOSAL **C**



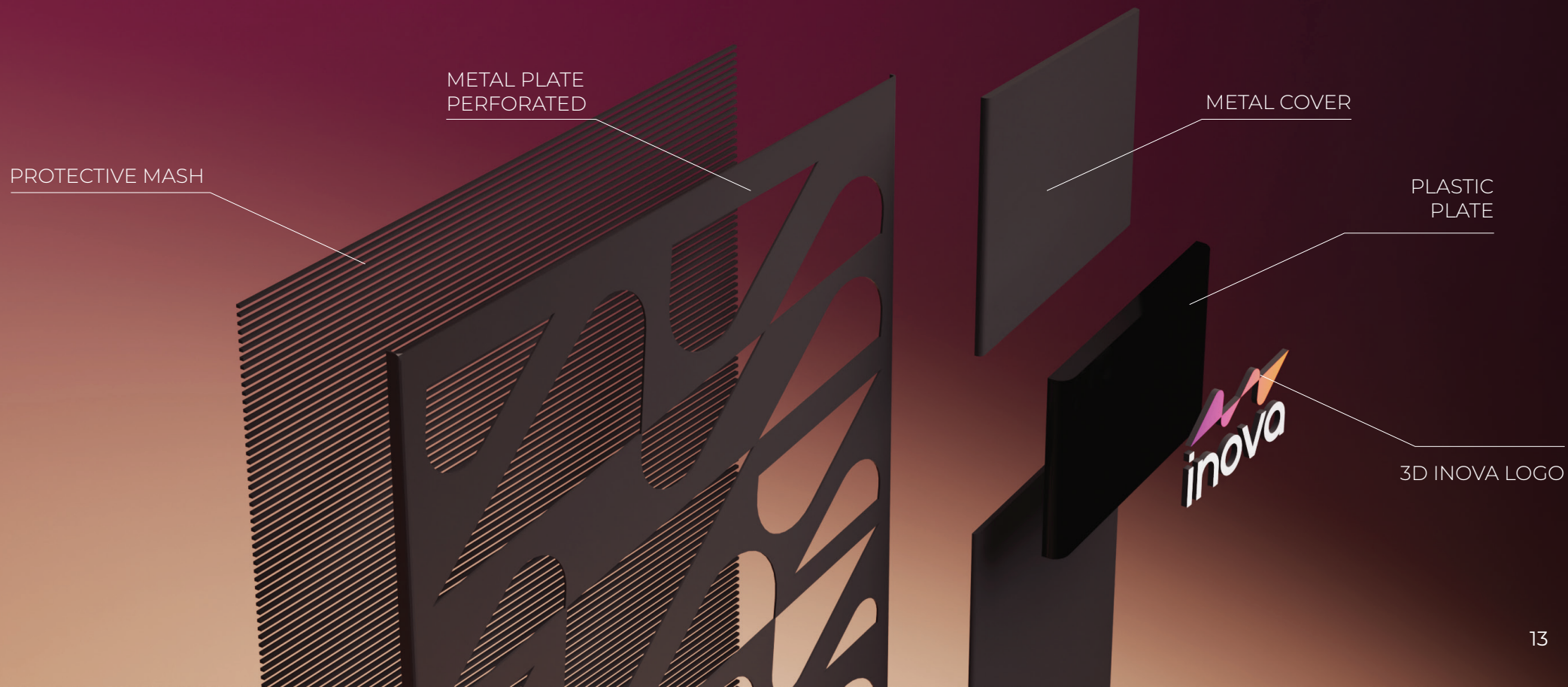
Another proposal where the mask design is directly inspired by the Inova logo, this time with an even more direct connection.

The mask covering the components is a separate element, and the logo is situated on a plate that follows the shape of the logo itself.

The mesh behind the perforated plate adds the finishing touch to the overall impression.







# PROPOSAL **D**



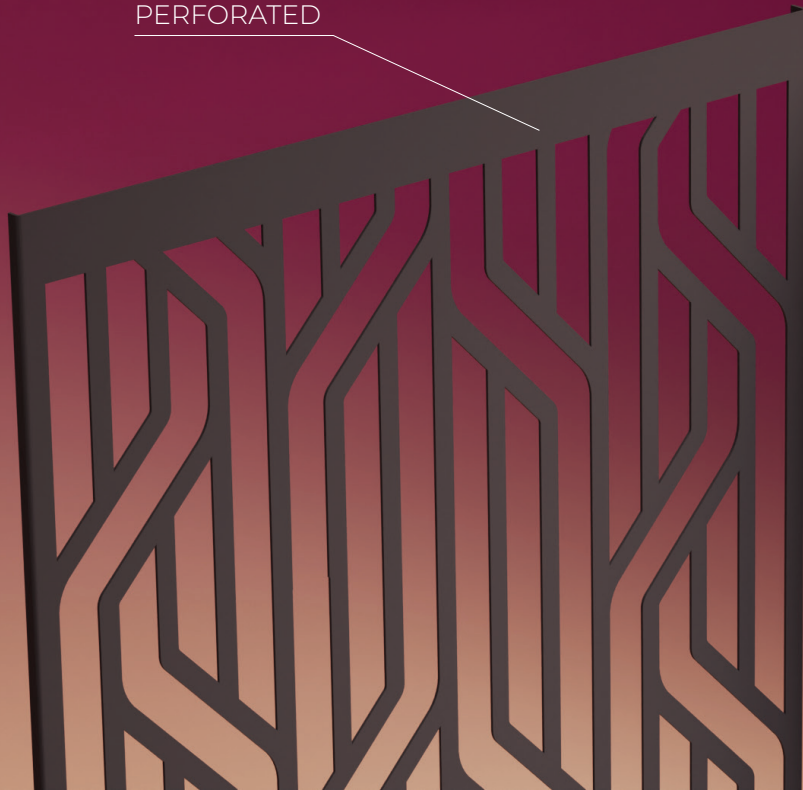
This proposal draws inspiration from organic shapes, seamlessly transformed into perforations on the grille.

The covering mask on the right side stands out as a distinct element, while the 3D logo, placed directly on metal in this design, adds a touch of modernity to the overall aesthetic.





METAL PLATE  
PERFORATED



METAL COVER



3D INOVA LOGO

